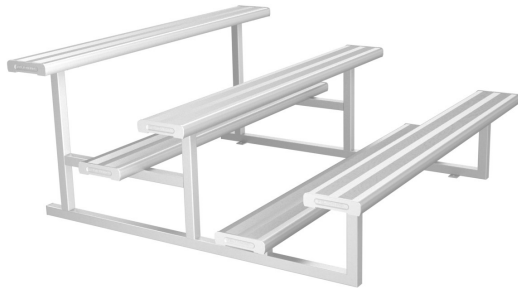


**WARNING: READ THE ASSEMBLING INSTRUCTIONS CAREFULLY BEFORE ASSEMBLING THE TIER SEATING.**

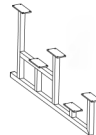


Make sure to wear protective gloves and foot protection when installing and assembling this product. Unpack the unit and make sure all the components are included before proceeding. This activity requires two or more people as lifting is involved. Please ensure bolts are only finger-tightened during the assembling process for flexibility in lining up components. Securely tighten the bolts before anchoring the product to the ground.



**3 TIERS x 2 m. SEATING**  
(Code No: 3TKG2)

PART No.	PART NAME	QTY
3TK1	ALUMINIUM FRAME	3
3TK2	2000- mm. ALUMINIUM FOOT/ SEATING PLANK	5
3TK3	M6 X25 mm. HEXAGONAL HEAD BOLT	40
3TK4	M6 LOCKNUT	40



[3TK1]



[3TK2]



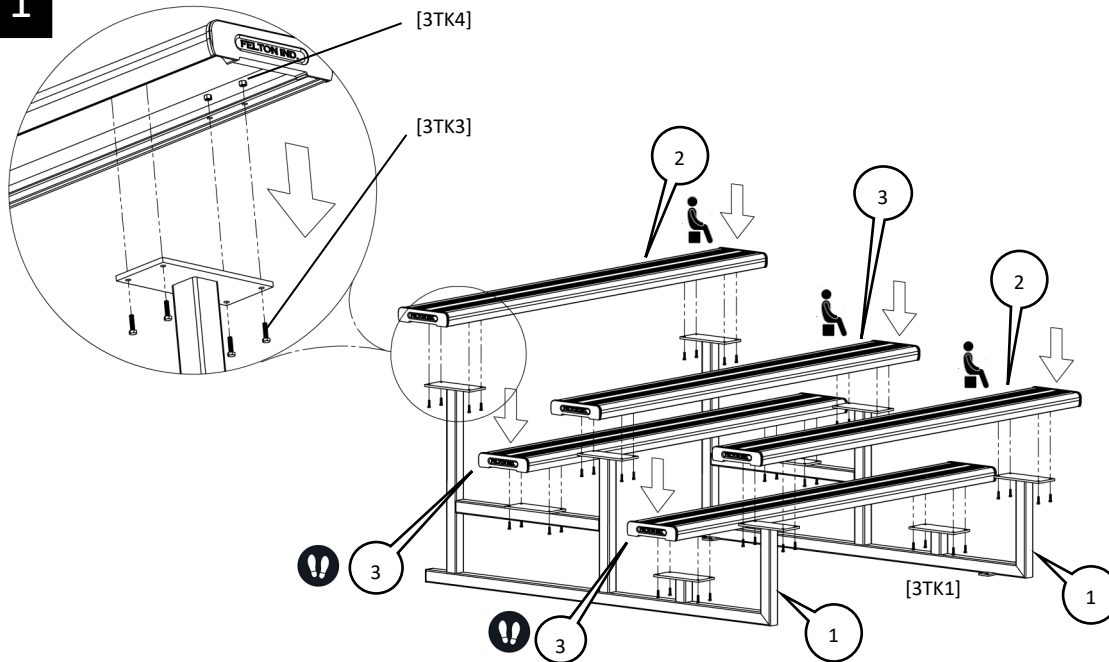
[3TK3]



[3TK4]

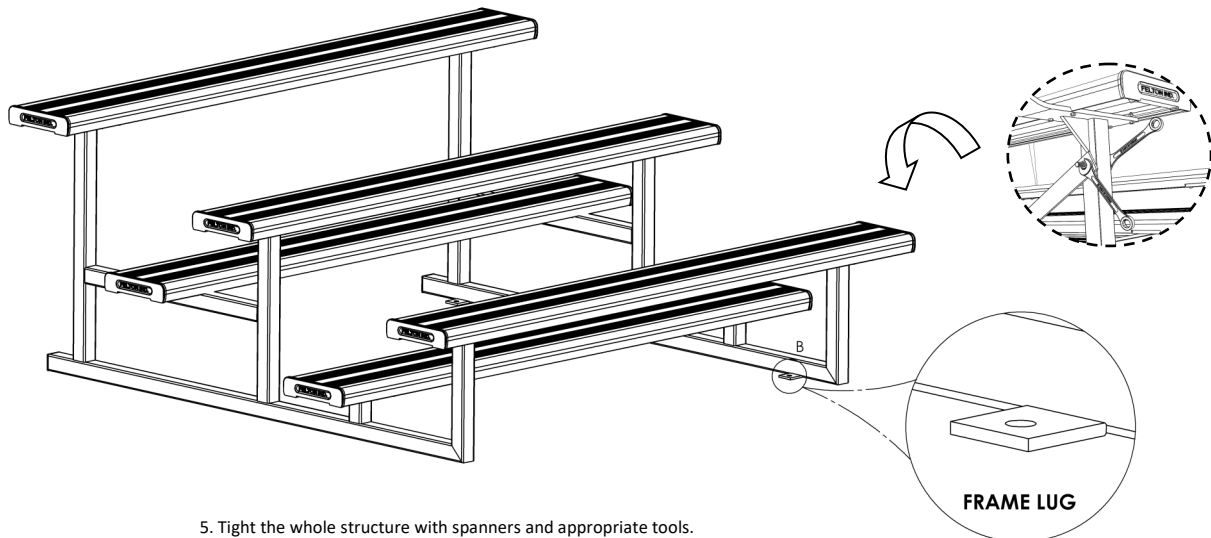
Thank you for purchasing our high quality products. The Tier Seating has been well manufactured with certified materials, to achieve high reliability and minimum maintenance. It is our commitment to provide you cost-effective solutions for outdoor applications.

**1**



1. Have the two external frames [3TK1] up with bolt down lugs facing inwards (STEP1).
2. Place both the back and front seating planks [3TK2] onto top frames [3TK1] and secure them with hexagonal bolts [3TK3] and lock nuts [3TK4] - finger tighten (STEP2).
3. Repeat the same assembly process with the rest of the seating/foot planks [3TK2] as per item 2 details, (STEP3).

**2**



5. Tight the whole structure with spanners and appropriate tools.
6. Attach the whole unit to the ground, with dyna-bolts on each frame lug.

**FRAME LUG**